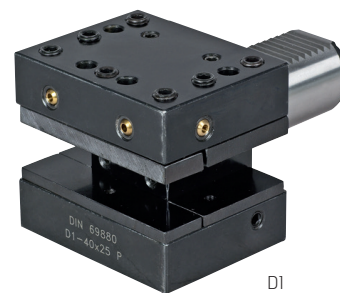
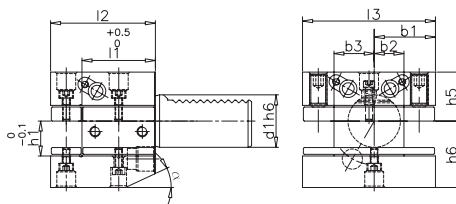


Werkzeughalter DIN 69880

Ausführung:
- radial
- mit Kugelspritzdüse

DIN
69880

Lieferung:
Unterlegscheibe verbaut.



D1

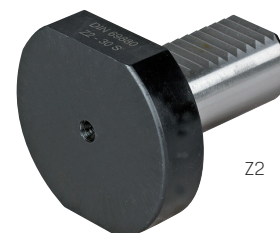
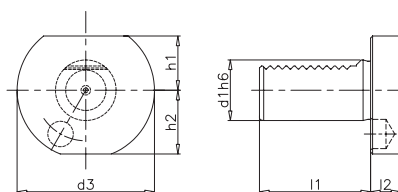


D2

| Form $d_1 \times h_1 \times l_2$ mm | 233700 Form D1 (RG 2300) | 233750 Form D2 (RG 2300) | d_1 mm | b_1 mm | b_2 mm | b_3 mm | h_1 mm | h_5 mm | h_6 mm | l_1 mm | l_2 mm | l_3 mm |
|--|--------------------------------|--------------------------------|-------------|-------------|-------------|-------------|-------------|-------------|-------------|-------------|-------------|-------------|
| D125×16×48 | 217,10 | - | 25 | 33,0 | 19 | 19,0 | 16/12 | 25,0 | 30,0 | 34 | 48 | 66 |
| D225×16×48 | - | 217,10 | 25 | 33,0 | 19 | 19,0 | 16/12 | 25,0 | 30,0 | 34 | 48 | 66 |
| D130×20×60 | 194,30 | - | 30 | 35,0 | 17 | 23,0 | 20/16 | 38,0 | 28,0 | 42 | 60 | 76 |
| D230×20×60 | - | 194,30 | 30 | 35,0 | 17 | 23,0 | 20/16 | 35,0 | 38,0 | 42 | 60 | 76 |
| D140×25×72 | 215,10 | - | 40 | 42,5 | 21 | 25,5 | 25/20 | 48,0 | 32,5 | 50 | 72 | 90 |
| D240×25×72 | - | 220,10 | 40 | 42,5 | 21 | 25,5 | 25/20 | 42,5 | 48,0 | 50 | 72 | 90 |
| D150×32×85 | 273,20 | - | 50 | 50,0 | 26 | 30,5 | 32/25 | 35,0 | 60,0 | 60 | 85 | 105 |
| D250×32×85 | - | 273,20 | 50 | 50,0 | 26 | 30,5 | 32/25 | 50,0 | 60,0 | 60 | 85 | 105 |
| D160×32×110 | 364,30 | - | 60 | 57,5 | 33 | 33,0 | 32/25 | 62,5 | 42,5 | 85 | 110 | 115 |
| D260×32×110 | - | 364,30 | 60 | 57,5 | 33 | 33,0 | 32/25 | 62,5 | 62,5 | 85 | 110 | 115 |

| Form d_1 mm | 233800 Form Z2 S aus Stahl (RG 2301) | d_1 mm | d_2 mm | h_1 mm | l_1 mm | l_2 mm |
|------------------|---|-------------|-------------|-------------|-------------|-------------|
| Z216S | 29,80 | 16 | 40 | 18,0 | 45 | 13 |
| Z220S | 29,80 | 20 | 50 | 23,0 | 56 | 16 |
| Z225S | 32,30 | 25 | 58 | 25,0 | 64 | 16 |
| Z230S | 28,25 | 30 | 68 | 28,0 | 71 | 16 |
| Z240S | 33,65 | 40 | 83 | 32,5 | 83 | 20 |
| Z250S | 38,50 | 50 | 98 | 35,0 | 98 | 20 |
| Z260S | 55,15 | 60 | 123 | 42,5 | 114 | 20 |

DIN
69880



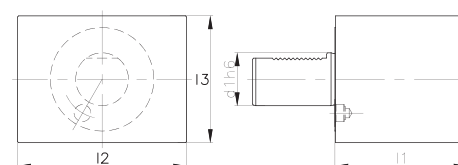
Z2

| Form d_1 mm | 233850 Form Z2 P aus Kunststoff (RG 2301) | d_1 mm | d_2 mm | h_1 mm | l_1 mm | l_2 mm |
|------------------|--|-------------|-------------|-------------|-------------|-------------|
| Z216P | 33,55 | 16 | 40 | 18,0 | 45 | 13 |
| Z220P | 13,65 | 20 | 50 | 23,0 | 56 | 16 |
| Z230P | 11,80 | 30 | 68 | 28,0 | 71 | 16 |
| Z240P | 13,65 | 40 | 83 | 32,5 | 83 | 20 |
| Z250P | 22,85 | 50 | 98 | 35,0 | 98 | 20 |
| Z260P | 26,90 | 60 | 123 | 42,5 | 114 | 20 |

Ausführung:
Vierkant-Rohlinge für Sonderausführungen Form A1
Schaft und Anlagefläche gehärtet und geschliffen

DIN
69880

| Form $d_1 \times l_1$ mm | 233900 (RG 2300) | d_1 mm | l_2 mm | l_1 mm | l_3 mm |
|-----------------------------|---------------------|-------------|-------------|-------------|-------------|
| A116×44 | 78,95 | 16 | 78 | 44 | 44 |
| A120×65 | 85,00 | 20 | 100 | 65 | 60 |
| A125×75 | 129,00 | 25 | 100 | 75 | 60 |
| A130×85 | 129,00 | 30 | 130 | 85 | 76 |
| A140×100 | 197,30 | 40 | 151 | 100 | 96 |
| A150×125 | 265,60 | 50 | 160 | 125 | 120 |
| A160×160 | 364,30 | 60 | 165 | 160 | 125 |

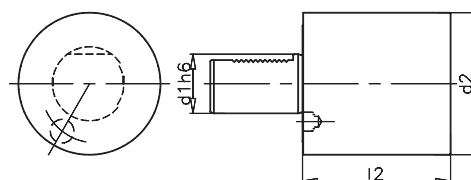


A1

Ausführung:
Zylinder-Rohling für Sonderausführungen Form A2
Schaft und Anlagefläche gehärtet und geschliffen

DIN
69880

| Form $d_1 \times l_1$ mm | 233950 (RG 2300) | d_1 mm | d_2 mm | l_2 mm |
|-----------------------------|---------------------|-------------|-------------|-------------|
| A216×60 | 57,70 | 16 | 40 | 60 |
| A220×70 | 54,65 | 20 | 50 | 70 |
| A225×80 | 71,35 | 25 | 58 | 80 |
| A225×200 | 91,10 | 25 | 58 | 200 |
| A230×100 | 71,35 | 30 | 68 | 100 |
| A230×240 | 115,30 | 30 | 68 | 240 |
| A240×120 | 74,40 | 40 | 83 | 120 |
| A240×320 | 154,80 | 40 | 83 | 320 |
| A250×135 | 101,70 | 50 | 98 | 135 |
| A250×400 | 288,40 | 50 | 98 | 400 |
| A260×150 | 182,10 | 60 | 123 | 150 |
| A260×480 | 455,40 + | 60 | 123 | 480 |



A2